



## INA Service Info



# Coolant pump 538 0714 10

## Reinforced bearing

Manufacturer: Alfa Romeo, Cadillac, Chevrolet, Chrysler, Fiat, Jeep, Lancia, Opel, Saab

### Models:

Alfa Romeo: 147, 156, 159, 166, Brera, Giulietta, GT, Mito

Cadillac: BLS

Chevrolet: Malibu

Chrysler: Delta

Fiat: Bravo, Croma, Doblo, Freemont, Idea, Stilo

Jeep: Cherokee, Renegade

Lancia: Delta, Musa, Thesis

Opel: Astra, Combo, Insignia, Vectra, Zafira

Saab: 9-3, 9-5

Engines: 1.6 D, 1.9 D, 2.0 D, 2.4 D

Part no.: 538 0310 10  
538 0714 10

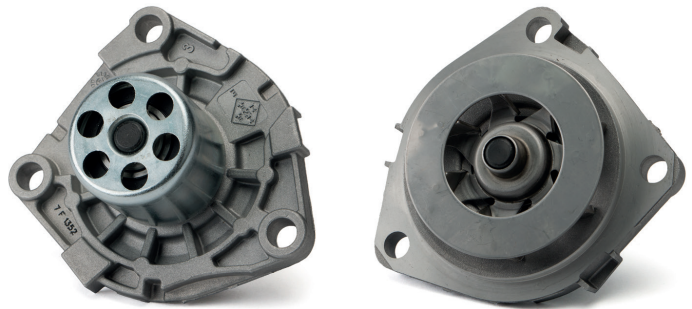


Photo 2: 538 0714 10 – coolant pump with reinforced, external bearing

In the timing system of the vehicles listed here, a manual tensioner pulley is used to tension the timing belt. The pulley does not compensate for temperature fluctuations, or load changes in the timing belt system. For this reason, higher mileage can increase timing belt vibrations, thereby leading to timing drive system overload.

The reinforced, external bearing on the coolant pump 538 0714 10 has a higher capacity, and therefore extends the service life.

For current listing refer to catalogue media

The improved design replaces coolant pump 538 0310 10.

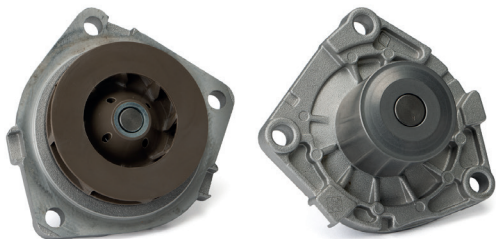


Photo 1: 538 0310 10 – coolant pump with standard bearing

Please observe the vehicle manufacturer specifications!

### You want more? We can help!

Phone: +44 (0) 1432 264 264

Fax: +44 (0) 1432 375 760

aftermarket.uk@schaeffler.com

www.repxpert.co.uk

SCHAEFFLER  
**REP>XPERT**